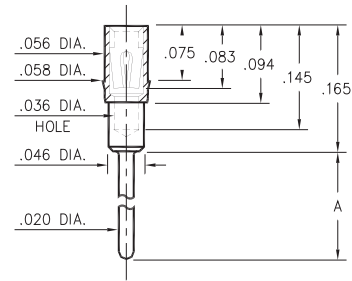
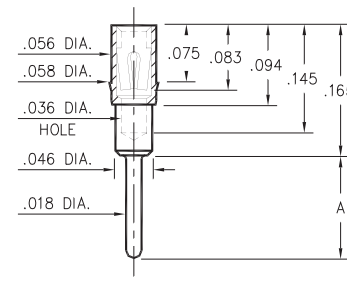


### 1802/3802/4030/8866

### 1803/1805/1808/3805



Basic Part Number	Length A
1802-0	.125
3802-0	.165
8866-0	.775
4030-0	.815



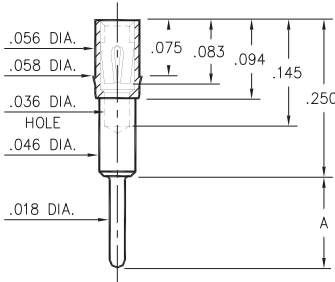
Basic Part Number	Length A
1808-0	.100
1803-0	.145
1805-0	.213
3805-0	.393

**XXXX-0-15-XX-43-XX-04-0**  
Press-fit in .057 mounting hole

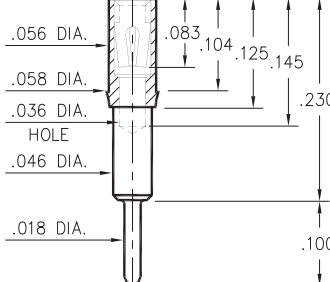
**XXXX-0-15-XX-43-XX-04-0**  
Press-fit in .057 mounting hole

### 1804/1806

### 1807



Basic Part Number	Length A
1804-0	.080
1806-0	.115



**180X-0-15-XX-43-XX-04-0**  
Press-fit in .057 mounting hole

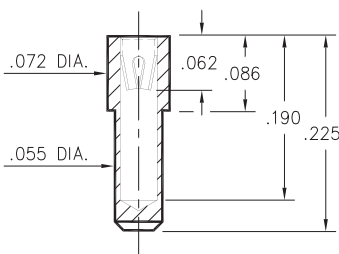
**1807-0-15-XX-43-XX-04-0**  
Press-fit in .057 mounting hole

### 8830

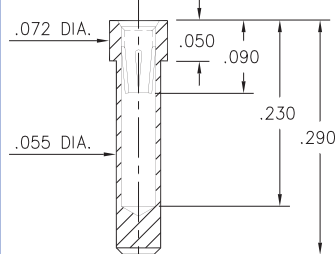
### 8363

### 4622

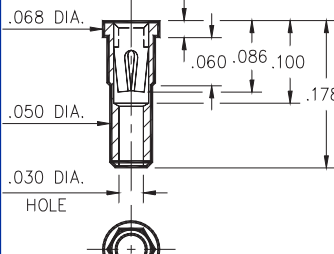
### 6252



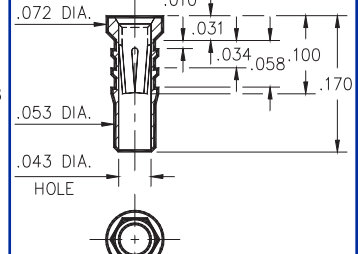
**8830-0-15-XX-22-XX-10-0**  
Solder mount in .057 min. mounting hole



**8363-0-15-XX-35-XX-10-0**  
Solder mount in .057 min. mounting hole



**4622-0-15-XX-30-XX-10-0**  
Hex press-fit in .053 plated thru hole



**6252-0-15-XX-32-XX-10-0**  
Hex press-fit in .057 plated thru hole

#### SPECIFICATIONS

**SHELL MATERIAL:**  
Brass Alloy 360, 1/2 Hard

**CONTACT MATERIAL:**  
Beryllium Copper Alloy 172, HT

**DIMENSION IN INCHES**  
**TOLERANCES ON:**  
LENGTHS: ±.005  
DIAMETERS: ±.002  
ANGLES: ± 2°

**ORDER CODE: XXXX - X - 15 - XX - XX - XX - XX - 0**

**BASIC PART #**

**SPECIFY SHELL FINISH:**  
01 200µ" TIN/LEAD OVER NICKEL  
◇ 80 200µ" TIN OVER NICKEL (RoHS)  
◇ 15 10µ" GOLD OVER NICKEL (RoHS)

**SPECIFY CONTACT FINISH:**  
02 100µ" TIN/LEAD OVER NICKEL  
◇ 84 100µ" TIN OVER NICKEL (RoHS)  
◇ 27 30µ" GOLD OVER NICKEL (RoHS)



**SELECT CONTACT**

#22, #30, #32 or #43 CONTACT (DATA ON PAGES 218,219 & 220)